

Issue No. 273

# Hill & Valley

THE PARISH MAGAZINE OF HURSTBOURNE PRIORS, LONGPARISH, ST MARY BOURNE & WOODCOTT

50p

November 2023



Remembrance Day - 12<sup>th</sup> November



## A Word from our Vicar

The November Parish Magazine inevitably focusses on Armistice and Remembrance Sunday, that peace amongst communities is the only way for humanity to truly flourish, because ultimately war does not solve our problems. This is said with more vigour this year, with the crisis and conflict in Israel and Palestine, and Ukraine and Russia amongst many such wars around our world today.

I read there were nine hundred thousand British dead from the First World War, with hundreds of thousands more wounded, blinded, suffering from shell shock and mental health problems. In 2009, a London newspaper reflected on the news that Harry Patch aged 111yrs and Henry Allingham aged 113yrs had died, the final British veterans of the First World War. Before he died Mr. Allingham said 'War is stupid. Nobody wins. You might as well talk first, because in the end you have to talk anyway'. Such words of wisdom roll down the years to us all today... when will we learn our lesson, we might ask?

The horror of war is not in doubt, and the deaths of local people in our corner of Hampshire in the First and Second World War and other conflicts since were a great tragedy, but they were not for nothing! Though it can rightly be argued war is sometimes necessary (if cruel), we honour those who fought and died with a mixture of sorrow and a sense of waste because no cause can ever justify such a horrendous sacrifice of human life and suffering.

As we wear our poppies this season, we remember the costly sacrifice made by others for us and our freedoms today, and we value what they did, we should never forget and must teach the generations behind us likewise.

May we hear the 1918 Armistice cry of "NEVER AGAIN" and commit ourselves to dialogue and breaking the cycle of violence our world continues to be caught up in. May we wear our poppies with pride, as a symbol of Remembrance, and also how Jesus taught us to treat others with dignity and respect human life; when we deny hatred and embrace love - we will remember them!

Grace and Peace

*David*     **The Revd David Roche**  
Vicar

## ***Silence: a Sonnet for Remembrance Day*** By Malcom Guite

*November pierces with its bleak remembrance  
Of all the bitterness and waste of war.  
Our silence tries but fails to make a semblance  
Of that lost peace they thought worth fighting  
for.*

*Our silence seethes instead with wraiths and  
whispers,  
And all the restless rumour of new wars,  
The shells are falling all around our vespers,  
No moment is unscarred, there is no pause,  
In every instant bloodied innocence  
Falls to the weary earth, and whilst we stand  
Quiescence ends again in acquiescence,  
And Abel's blood still cries in every land  
One silence only might redeem that blood  
Only the silence of a dying God.*



Services in the Parish Churches

November 2023

All Zoom details are available from the Church wardens or Dodie Marsden.

Sunday 5<sup>th</sup> - Trinity 23

St Andrew's, Hurstbourne Priors	10.30am	Morning Praise
St Nicholas', Longparish	10.30am	Holy Communion
St Peter's, St Mary Bourne	10.30am	Holy Communion
St James', Woodcott	9.00am	Holy Communion

Home Zoom Service at 10.30am

Wednesday 8<sup>th</sup>

St Peter's, St Mary Bourne	9.30am	Holy Communion
----------------------------	--------	----------------

Sunday 12<sup>th</sup> - Remembrance

St Andrew's, Hurstbourne Priors	10.50am	Remembrance Service
St Nicholas', Longparish	10.50am	Remembrance Service
St Peter's, St Mary Bourne	10.50am	Remembrance Service
St James', Woodcott	9.00am	Remembrance Service

Winchester Cathedral Church of England Zoom Service Online

Sunday 19<sup>th</sup> - Trinity 25

St Andrew's, Hurstbourne Priors	10.30am	Holy Communion
St Nicholas', Longparish	10.30am	Family Praise
St Peter's, St Mary Bourne	10.30am	Holy Communion
St James', Woodcott		No service

Home Zoom Service at 10.30am

Wednesday 22<sup>nd</sup>

All Hallows', Whitchurch	9.30am	Holy Communion
--------------------------	--------	----------------

Sunday 26<sup>th</sup> - Christ The King

St Andrew's, Hurstbourne Priors	4.00pm	St Andrew's Day Service
St Nicholas', Longparish		No service
St Peter's, St Mary Bourne	6.00pm	Benefice Evensong
St James', Woodcott		No service

Home Zoom Service at 10.30am

For all enquiries about Baptisms, Weddings, Funerals in any of the parish churches, please contact the Church Office Administrator: ☎ 01256 893573 [brightwatersbenefice@gmail.com](mailto:brightwatersbenefice@gmail.com)

Rev David Roche: ☎ 01256 892535 [revd.davidroche@hotmail.com](mailto:revd.davidroche@hotmail.com)

Rev Canon Dodie Marsden: ☎ 01264 738211 [dodie.marsden@gmail.com](mailto:dodie.marsden@gmail.com)

• For details of Roman Catholic Services in Whitchurch or Andover: ☎ 01264 352829

• Methodist Minister for our parishes: The Revd Rachel Borgars, 11 Lapwing Rise, Whitchurch, RG28 7SU ☎ 01256 895878 or [rachel.borgars@methodist.org.uk](mailto:rachel.borgars@methodist.org.uk)

From the Church Registers

Funerals

"Into God's loving care we commit you ..."

We offer our deepest sympathy to the family and friends of

Gina Annie Yates

25<sup>th</sup> October - interment of ashes - St Andrew's, Hurstbourne Priors

LET US PRAY - If you would like us to pray for you or someone else, please email [stnbrightwaters@icloud.com](mailto:stnbrightwaters@icloud.com) giving the name (no surname required) and include a reason if you wish, or contact a member of the local ministry team.







THE GLOBAL  
ARTICHOKE

THE PINK BARN, LONGPARISH

Educational, creative  
& practical workshops

TO INSPIRE & AWAKEN NEW SKILLS

YOU CAN FIND ALL OUR COURSES AT:  
WWW.THEGLOBALARTICHOKE.COM

@the\_global\_artichoke

**MARH**  
fuels



Oil



Gas



Coal

01635 253253



Andover Carpet  
Cleaning Co.

Carpets, Rugs, Suites,  
Sofas, Recliners etc.

Scotchguard &  
Deodorise Treatment

Call 01264 334636  
Mobile  
07850 677 761

**AS WAITE & SON LLP**  
PLUMBING & HEATING ENGINEERS

- Heating Systems
- Bathroom design & installation
- Unvented pressurised systems
- Underfloor heating
- Oil boiler specialists;  
service, maintenance &  
installation

Whitchurch (01256) 893845  
Darrell Mobile: 07884 481490  
Tony Mobile: 07831 366188



**TREE AND GARDEN  
SERVICES**

Contact Drew

01256 893566 ~ 07720 842451

monkeybusiness77@hotmail.co.uk

NCHARB ~ Fully Insured ~ Free estimates and advice



**GWYNNE DENTAL**  
QUALITY PRIVATE DENTISTRY

OFFICE@GWYNNEDENTAL.CO.UK

WWW.GWYNNEDENTAL.CO.UK

01256 321 945

All aspects of  
general dentistry

Facial aesthetics  
and invisalign

Same day emergency  
treatment

Advanced restorative  
treatment including  
implants



**HEATSOURCE  
BOILERS LTD**

All makes of oil and gas boiler  
servicing, repair and replacement.

07952 671669 / 01962 761339

**Myddelton & Major**

Property Experts since 1903

Contact us for a valuation and marketing appraisal,  
tailored to suit your needs

AlexisKirchell@myddeltonmajor.co.uk

DavidSmith@myddeltonmajor.co.uk

The Old Police House,  
High Street,  
Stockbridge,  
SO20 6HE

Tel: 01264 810400

E: stockbridgeresidential@myddeltonmajor.co.uk

## Frenches Farm livery

- Beautiful livery on working farm
- Spaces available for DIY, competition, full and part livery
- Access to all facilities including indoor and outdoor arena, lunge pen and jumping field
- Stunning off road farm hacking routes and local bridal ways
- Well - kept summer and winter paddocks for daily turn out

Frenches Farm Livery

Facebook: Frenches Farm Livery

Website: [www.frenchesfarmlivery-andover.co.uk](http://www.frenchesfarmlivery-andover.co.uk)

Email: [anna.frenchesfarm@gmail.com](mailto:anna.frenchesfarm@gmail.com)

Find us in **Little London, Andover, SP11 6JG**

Please email for more information



**Aardvark**  
Cleaning Services Ltd

Professional cleaning service specialising in carpets,  
stone flooring, cooking appliances and upholstery

07783810806

[www.aardvarkcleaningservicesltd.com](http://www.aardvarkcleaningservicesltd.com)



*The Community Library - Club Room*  
*Saturday mornings between 10.30 and 12.30*

**The Boundary Community Shop & Café - 100 Club**

**October 2023 draw:**

£50 - Ruth Widén      £20 - Serena Coultou  
 £20 - Ned Lawrence    £10 - Peter St Quintin

**The next 100 Club Draw:** Saturday 11<sup>th</sup> November  
**Application Forms to join the 2024 Village Shop 100 Club will be at the Boundary beginning of November.**

**Pay at the till. Payment by cash or debit card only please. £25 gives you 48 chances to win a monthly cash prize + an extra £50 draw at Christmas.**

*All proceeds in support of our Village Shop.*



**Coffee at The George Inn**

All ages are welcome, from all the villages, to a social coffee morning at

**The George Inn** St Mary Bourne on **Tuesday 14<sup>th</sup> November at 10.30am**

£2.50 for coffee and biscuits - For more information contact Win Coventry - ☎ 01264 738 199.

**The Lunch**

Our next Village Lunch is on **Wednesday 8<sup>th</sup> November** at St Mary Bourne Village Centre, starting to serve at 12.30pm. Don't forget that for November and December our lunches are held on the **2<sup>nd</sup> Wednesday** of the month, rather than the 3<sup>rd</sup>. As usual there will be a raffle at our December Christmas lunch, and we would be very grateful for any prize donations being brought along to the November lunch. If you need a lift, please phone Chris Smith on ☎ 01264 738110 by Noon on the Tuesday. CS

**Christmas wreath making**

**Saturday 2<sup>nd</sup> December - 2.30pm**  
**Village Centre Club Room**



**Join me for a relaxed friendly afternoon making your own front door wreath.**

Using fresh foliage and with a choice of decorative additions create a unique wreath to welcome the festive season into your house.

This is suitable for complete beginners, and we will walk through each process. Cost £45 includes homemade refreshments. Numbers are limited and are on first come first served basis.

**Reserve your place by calling Rebecca Anning on ☎ 07876 315401**

**St Peter's Church**  
**CHRISTMAS**  
**BAZAAR**

**Saturday 25<sup>th</sup> November**  
 St Mary Bourne Village Centre  
**2 to 4pm**

Come along, browse the stalls, meet your friends and enjoy a cuppa and a slice of Christmas cake. Everything on the stalls is kindly donated so the profits will go straight to supporting our Village Church.

- The Deli is there to delight you • Be tempted by Nigel's legendary olives • Buy delicious home-made cakes • Bric-a-brac • Toys • Books • Tombola
- Bottle stall • Raffle • Teas.

**Hope to see you there!**

**Donations of Toys, Books, Bric-a-brac will be greatly received on the morning of the Bazaar.** VP



At **St Mary Bourne Primary School** we are always

trying to find new ways to support our children and develop a real love of reading within them. Our children love to read with adults and so we were wondering if there are any local people who may be willing to give up a little time to read with our pupils.

**We are very aware that time is precious and life is busy but even 30 minutes of your time would make a big difference.**

Possible times would be during mornings (from 8.45 to 9.15) or afternoons (from 3.00 to 3.30). This could be any day of the week. If anyone is able to give more time, then that would also be very welcome.

If you are interested in helping us, please contact the school office directly so we can give you more information. Many thanks.

Please call **01264 738336** or email [adminoffice@st-marybourne.hants.sch.uk](mailto:adminoffice@st-marybourne.hants.sch.uk).



**Dodie is giving a talk in Longparish**

**On Tuesday 14<sup>th</sup> November** Dodie will be giving a 'Tuesday Talk' in Longparish Village Hall entitled '**Adventures in Uganda**'. This is part of the Longparish Community Association (LCA), but visitors are more than welcome. The doors open at 6.30pm. The talk starts at 7.00 and lasts about 40 minutes followed by any questions.

There is a cash bar, and a basket is provided for any voluntary donations to cover the cost of hiring the hall. Do come along if you can – it should be an interesting occasion.



## BOURNE Again Feet

Hilary Steeden MGFHP MAFHP

Foot Health Practitioner

Tel: 01264 738 554

Mob. 07787 703 900

- . Problem Nails
- . Verrucas
- . Corns
- . Cracked Heels
- . Hard Skin
- . Fungal Infections



## BELVEDERE TRAVEL



Catered gulet holidays in Turkey

[www.belvederetravel.com](http://www.belvederetravel.com)

email [info@janeblount.co.uk](mailto:info@janeblount.co.uk)

01264 738533 and 07884003082

## THE SNAPPY DRESSER

- Stoke Charity -

YOUR LOCAL NEW AND PRE-LOVED  
WOMEN'S CLOTHES SHOP

Open Tuesday and Wednesday 9.30 - 1.00

[www.thesnappydresser.co.uk](http://www.thesnappydresser.co.uk)

07973 920525 07831 131331

## BREACH FARM WOODLAND BURIAL GROUND ST MARY BOURNE, SP11 6DQ

A beautiful woodland burial ground  
overlooking the Bourne Valley

Single, Double and Ashes plots available.  
Area for pets.

For further information/request a brochure:-  
Mobile: 07789 888399

Email: [lisa@breachfarmwoodlandburialground.co.uk](mailto:lisa@breachfarmwoodlandburialground.co.uk)  
[www.breachfarmwoodlandburialground.co.uk](http://www.breachfarmwoodlandburialground.co.uk)



**DRAIN TECH**  
TANKERS.COM

**01264 710543**

- Septic Tank and Cesspit Emptying
- Sewage Treatment Plant Emptying
- High Pressure Jetting on board vehicles
- Grease Trap and Oil Interceptor Emptying
- 24 Hours 7 Days a Week Service
- Drainage System Installation and Maintenance
- Multi Tank Discount Loyalty packages available



Email: [booking@draintechtankers.com](mailto:booking@draintechtankers.com) Web: [www.draintechtankers.com](http://www.draintechtankers.com)

## WEST JOINERY

- Bespoke doors
- Windows
- Kitchens
- Wardrobes
- Bookcases

For all your  
joinery needs

**07717 570748**

[Julian@uswests.co.uk](mailto:Julian@uswests.co.uk)

## NETHAUS

AV • LIGHTING • CONTROL

- Home automation & control
- Television installation
- Wi-Fi & data networking
- Sonos & Hi-Fi
- Bespoke cinema rooms
- CCTV & security
- Lighting control

**0800 0843070**

## Whitchurch Wills

**FREE INITIAL CONSULTATION** "FRIENDLY, ACCESSIBLE AND QUALITY SERVICE"

**YOUR LOCAL WILL WRITER FROM WHITCHURCH**

- Will Writing
- Review of existing Wills
- Lasting Power of Attorney
- Estate Planning
- Trusts
- Probate Services

Clare Datta, BA(Hons) MSWW  
T: 01256 896336 M: 07810 455581  
E: [claredatta@whitchurchwills.co.uk](mailto:claredatta@whitchurchwills.co.uk) W: [www.whitchurchwills.co.uk](http://www.whitchurchwills.co.uk)





**Well!!**

What can I tell you that you don't already know? The nights are drawing in, Christmas is lurking on the horizon and it's really cold outside!

As usual, we will be taking orders for everything you need to make your Christmas stress free, local, and gorgeous! **Fresh turkeys,**

**fruit and vegetables, hams, Christmas puddings, mince pies,** all available to collect in one easy pick up and avoid all those supermarket queues! Pop in and collect an order form from 1<sup>st</sup> November and make your life really easy!!

We will also have a range of small **gifts** for all those stockings that will be hanging up on Christmas Eve, as well as lots of lovely **decorations** to make your home the perfect place to be!

In other news, we have also been nominated as Finalists for *The Plunkett and North Barnes Farm Partnership's Rural Community Business Awards*. This is a great honour and recognises all the hard work that we have put in to make our shop and café the best around. We will be hightailing it up to the ceremony awards in London, later this month, so wish us luck!!

Other than the run up to Christmas and being nominated for awards, life at The Boundary ticks on by. Can you believe that we will be **ONE** on the **1<sup>st</sup> of December!?** Do make sure you pop into the shop on the 1<sup>st</sup> and join us in our celebrations.

Lastly, we are pleased to announce that we now have our very own website! For all things Boundary related visit [www.theboundarismsb.co.uk](http://www.theboundarismsb.co.uk), or you can follow the link from the village website [www.stmarybourne.org](http://www.stmarybourne.org)

Lara and the Team



**'The Film' at St Mary Bourne Village Centre**



15 • 1 h 53 m

The future for the last remaining pub, The Old Oak, in a village of Northeast England, where people are leaving the land as the mines are closed. Houses are cheap and available, thus making it an ideal location for Syrian refugees.

**Tuesday 21<sup>st</sup> November - 7.15pm**

**Hall and Licensed Bar open from 6.45pm**

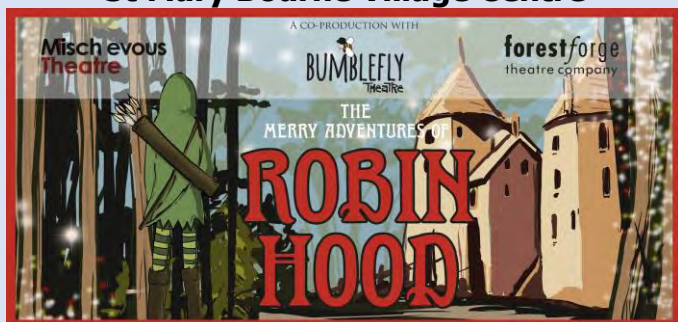
Tickets **£5** in advance or **£6** at the door  
Please reserve tickets in advance by email

[smbvillagecentre@btinternet.com](mailto:smbvillagecentre@btinternet.com)

[www.stmarybourne.co.uk](http://www.stmarybourne.co.uk)

**Next Film in January 2024**

**'Family Theatre' at St Mary Bourne Village Centre**



**60 minutes - for children 4 to 104 years**  
**Bumblefly, Forestforge and Mischievous Theatre**

*Can Robin and his barmy band of brigands save the poor people of the Forest? Right a few wrongs with mischief and merriment? Who will he meet in the woods today?*

A spangly, new swashbuckling tale of derring do and ridiculousness fresh from the Traveling Players suitcase.

**Friday 15<sup>th</sup> December - 6.30pm**

**Doors open 6pm**

All tickets: **£6** - children under 6: **£3**

Please reserve all tickets in advance by email [smbvillagecentre@btinternet.com](mailto:smbvillagecentre@btinternet.com)

Children must be accompanied by an adult

**Refreshments and Licensed Bar**



**Caretaker Position**

St Mary Bourne Village Centre is looking for a reliable and practical individual to attend to general tasks including but not limited to:-

- Security checks of windows and doors
- Procurement of consumables and replenishment
- Oversee minor repairs
- General tidy of the amenities.

**6 hours per week, pay negotiable, timing flexible**

**To apply and discuss further please email**

[Melissa.cavell@btinternet.com](mailto:Melissa.cavell@btinternet.com)





## Complete Carpentry Services

with over 30 years experience specialising in

- ◆ kitchen fitting
- ◆ bespoke furniture
- ◆ storage solutions

All work undertaken with pride

☎ **07979 802 443 for a quote**



Tree Care & Removal  
Hedge Care  
24/7 emergency call out  
Stump Removal

Trustworthy Arboriculture Specialists, family run and Based locally in Longparish, Hampshire

**CALL NOW FOR A FREE PROFESSIONAL QUOTE**

Find out more about us on our website

Find us on



[www.tcstrecare.co.uk](http://www.tcstrecare.co.uk)

07554996945



## BURLISON Photography

MPA Photographer of the Year 2020/2021



CAA Authorised & Insured Aerial Photography & Film. Family portraiture at home or on location.

- Wedding Photography & Film
  - Commercial
  - PR
- Interior & Lifestyle Photography & Film
- Corporate & Private Event Photography & Film
  - Image Restoration Service

Contact Dave on  
**07771 803025**



[www.burlisonphotography.com](http://www.burlisonphotography.com)



[info@burlisonphotography.com](mailto:info@burlisonphotography.com)



Tel: 01256 770374  
[info@overtonbathrooms.co.uk](mailto:info@overtonbathrooms.co.uk)  
@overtonbathrooms  
[www.overtonbathrooms.co.uk](http://www.overtonbathrooms.co.uk)

BATHROOMS PLUMBING SALES SHOWROOMS INSTALLATION

With over 30 years of experience Overton Bathroom Centre, can be relied upon to offer extensive product knowledge and installation expertise. We pride ourselves on our customer service and provide 'Supply Only' or 'Supply & Installation' to meet your requirements.

Please get in touch to discuss your needs!

Overton Bathroom Centre Ltd - 4 High Street Overton Hants RG25 3HA

## James Barnett

Quality Painting & Decorating



Advanced City & Guilds  
Over 25 Years Experience

Tel: 01264394543

Mobile: 07747603710

Email: [Jamesbarnett1@btinternet.com](mailto:Jamesbarnett1@btinternet.com)



# I SEE A LINE. I CROSS IT.

BESPOKE TAILORING BY [DRESS2KILL.COM](http://DRESS2KILL.COM)

£100 off your first **DRESS 2 KILL** Bespoke Suit



Exclusive offer for readers  
of The Hill & Valley Magazine

Dress 2 Kill now at 84 High St, Andover SP10 1NE Above At Last





## News and Views

### Parish Council Activities

#### Grant Applications

It's always nice to say that there is money available for specific activities – but there is!

The funding, from Basingstoke & Deane, comes with quite tight rules about what it can be spent on, but we are interested to hear if there are any projects going on in the parish that might be eligible.

Max is currently pulling together and listing out what these rules are so that we can publish them but in-between, if you have any social or community events and are looking for some support, then please forward details which we can review. No promises – but if we can, then we are happy to help.

#### We need you!

A position of **Footpaths Officer** has become available. We are looking for someone who likes to take an interest in parish paths and is willing to get out and about.

The position will be working with a representative from the council, so no need to attend meetings, but ideally anyone who wants to keep an eye on and monitor the condition of footpaths and identify priorities for the parish lengthsman and local teams to deal with.

If you are interested, please drop a message to Max (details below). We look forward to hearing from you!

#### Neighbourhood Plan

In line with news of the housing shortage, Basingstoke and Deane are looking at all spaces and considering how they can contribute to their ongoing short and longer-term needs.

The last neighbourhood plan was many years ago and could be considered as not fit for purpose for the needs we are now facing. This is incredibly important for the parish in which we live and how it may look like and develop during the years ahead. If we don't have a plan, then we have nothing to refer to in a defence. Future plans are not decided, so this is your opportunity, as parish members, to help shape your neighbourhood.

Please get in touch if you would like to get involved or have any experience with these type of projects – all assistance will be gratefully received.

#### Planning

In-line with the minutes from the last meeting, which are published on the parish notice board and on the website, all planning applications will also be mentioned in this space. If anyone wants to comment, please contact Basingstoke and Deane planning department and make your comments to them. The Parish Council can only make comments on specific aspects, and it is always more appropriate to make your comments to the decision makers directly.

23/02465/FUL - Medhurst, Stoke Lane - Demolition & Replacement  
 23/02405/FUL - Egbury Farm Barns - Demolition & Replacement  
 T/00414/23/TCA - 3 Bourne Meadow - Work on Trees  
 23/01946/LDEU - Green Pastures, Breach Farm - Lawful Development  
 T/00384/23/TCA - 1 Homestead, Stoke - Work on Trees  
 T/00350/23/TCA - Garston, Stoke - Work on Trees  
 T/00362/23/TCA - Swampton House, Stoke Lane - Work on Trees

#### Cricket Pavilion

The planning department at Basingstoke is overrun and slightly behind schedule, mainly due to the Manydown development. Therefore the recent application submitted has been deferred and is not likely to resurface until the end of the year or the beginning of 2024.

If you are interested and think you could help with anything or all things on the list, please get in touch with Maxine Owen, Parish Clerk, by emailing [clerk@stmarybourne-pc.gov.uk](mailto:clerk@stmarybourne-pc.gov.uk).

**Next parish council meeting: 14<sup>th</sup> November - 19.30**

Village Centre Club Room - Public more than welcome

Copies of minutes are available on the parish council website and notice boards. Please email any questions or agenda points to Maxine on [clerk@stmarybourne-pc.gov.uk](mailto:clerk@stmarybourne-pc.gov.uk)

Please follow / like our page so more people are aware that it exists - and we can continue to update all more frequently - [www.facebook.com/SMB.PCpage](https://www.facebook.com/SMB.PCpage) OM



### BUY YOUR CHRISTMAS TREE FROM FRIENDS OF ST MARY BOURNE SCHOOL

This year to help us raise money for a new sports pitch we will be selling several sizes of christmas tree.

4-5 ft - £25

5-6 ft - £35

6-7 ft - £45

7-8 ft - £55

8-10 ft - £65

10-12 ft - £75



Please scan the QR code to order or contact FOTSSMB@gmail.com. Last orders the 26<sup>th</sup> of November. Pick up from SMB Rec 1st Dec.

# CHRISTMAS CONCERT

**Charpentier *Messe de Minuit***  
**Corelli *Christmas Concerto***  
**Vaughan Williams *Fantasia on Christmas Carols***  
**Finzi *In Terra Pax***

**Saturday 2 December 2023 7.30pm**  
**St Mary's Church Andover**

**ANDOVER CHORAL SOCIETY**

**Andover Choral Society** presents its annual Christmas concert in **St Mary's Church, Andover** on **Saturday 2<sup>nd</sup> December at 7.30pm**. The choir will be accompanied by the **Westminster Chamber Orchestra** and professional soloists.

**Tickets £15**, available on the door or by email from [sue.woodley-47@gmail.com](mailto:sue.woodley-47@gmail.com). Pre-purchased tickets can be delivered to St Mary Bourne addresses by one of our members.



**SEASONED  
FIREWOOD**



**SHOTGUN  
CARTRIDGES**

- Gamebore
  - Bio Ammo
- BEST PRICES**

WOODCOTT FARMS RG28 7QA

Tel: 01635 250518

Email: [pamela.nicholson@woodcottfarms.com](mailto:pamela.nicholson@woodcottfarms.com)



**FRIENDLY, PROFESSIONAL PLUMBING SERVICES**

- For all your plumbing needs
- Excellent quality assured
- Bathroom & Wet Room specialists

**07866 475274**

[aljameson@agileplumbing.com](mailto:aljameson@agileplumbing.com)

[www.agileplumbing.com](http://www.agileplumbing.com)

## Jason Cousins Hair Salon

Come and visit our award winning Salon for a free consultation and excellent customer service

10c Colenzo Drive

Andover Hampshire SP10 1JS

**01264 356011**



**Kitchens, Bedrooms, Bathrooms,**

Visit our studio at Weyhill Farm - SP118DE



[www.saxondesigns.co.uk](http://www.saxondesigns.co.uk) - tel 01264 77 33 33



**Trust  
in Godwins to  
deliver**

**GODWINS  
SOLICITORS LLP**

12 St Thomas Street, Winchester, Hampshire SO23 9HF  
01962 841484 | [info@godwins-law.co.uk](mailto:info@godwins-law.co.uk)  
[godwins-law.co.uk](http://godwins-law.co.uk)

**Yew Cottage B&B  
Longparish, SP11 6QE**

01264 720325 | [yewcottage-longparish.com](http://yewcottage-longparish.com)



## Some thoughts in November

Shortening days, the solemn commemoration of Armistice, in church the celebrations of All Saints and All Souls—November thoughts turn to the 'village at rest'. Those unique fields, the churchyards and cemeteries, hold so much—memories, extraordinary stories, profound questions about mortality. 'God's acre' is an evocative and gentle way of referring to a churchyard. It sounds like a measured area, but in fact can be of any size. It is possible that those surrounding our ancient churches were burial sites predating the arrival of Christianity in this area and before the earliest church building.

We now expect to see a well-kept grassed area, the graves laid out in neat lines, many marked by stone memorials. There are wreaths and sprays of flowers left by mourning visitors. Hidden beneath the ground may be bricked family vaults, now sealed and forgotten. The box tombs of wealthy parishioners of the 18<sup>th</sup> and 19<sup>th</sup> centuries are impressive listed monuments. Some headstones are beautifully carved and engraved.

There has been a national move in recent years to sow wildflowers in as yet unused sections, to enhance the churchyard's natural beauty.

Wildlife hides relatively undisturbed in less visited corners of these fields, uncultivated for centuries. The yew tree common in ancient churchyards is one of the most long-lived of all our native trees. Hurstbourne Priors and St Mary Bourne churchyards have ancient yews of over 5m girth, probably over 500 years old: the Whitchurch and Woodcott yews are over 7m in girth and so even older. The longest human life is short in comparison.



The extraordinary words of committal declared at the burial of the dead confirm our place in the renewal of this garden: 'earth to earth, ashes to ashes, dust to dust'. They link us to the story of Adam, moulded by God from dust in the creation, and our own physical return to dust, awaiting the general resurrection. In every way, the soil of the churchyard is rich—in years, in nature, in sorrow, in the story of the village, its families and friendships. Perhaps the churchyard's greatest gift is to put us in our place, in the village and among its past characters, whether forgotten, remembered or honoured.

MC

## ST MARY BOURNE

### PARISH COMMUNITY FUND



can support anyone living in the parish of St Mary Bourne (including Stoke, Binley, Egbury, Wadwick, Little London & The Wykes) who is worried about essential living expenses, or unexpected extra costs due to illness, employment changes, family difficulties, medical conditions, or accidents.

**For more information** about the PCF for yourself or someone else, please contact:

Ruth Widén - 01264 738 250 - [ruth.widen@btinternet.com](mailto:ruth.widen@btinternet.com)

All enquiries are treated in complete confidence.



WATERCRESS & WINTERBOURNES

### The Stickleback: Small But Mighty

When we think of the fish in our chalk streams, we tend to picture the brown trout or the grayling. But if you've ever gone stream dipping, you might have met a smaller species: the three-spined stickleback. Often a mere four centimetres long and a single gram in weight, this diminutive fish lives up to the nickname of 'tiddler'.

Despite its official name, this stickleback can have two, three, or four spines along its top side. These spines can be locked in an upright position, which helps to deter predators.



The stickleback itself is an aggressive hunter: worms, tadpoles, and insect larvae are all on the menu, as are small fish, snails, and crustaceans.

Instead of scales, the stickleback's body is covered in bony plates called 'scutes'. For most of the year, these are dull in colour – brown on the back, and silver on the flank and belly. But when spring arrives, the male stickleback gets dressed up for the breeding season, gaining a red underside and bright blue eyes.

If a male is looking for love, he builds a nest out of plant material and spiggin; a sticky substance that he secretes from his kidneys. He then performs a zig-zagging dance, hoping that females will lay eggs in his nest. After each one leaves, it's back to the dance in search of more partners – the bigger the brood, the better.

This frenzy of activity continues after the eggs are fertilised. Oxygen is crucial to their development, so the male fans them with his tail while watching for predators. Sticklebacks tend to stay in the same area for their whole lives; around three to five years. So wherever you find one, it was most likely born there!

The stickleback can tolerate declining water quality, but sadly not all chalk stream species are so hardy. You can help to maintain a vibrant range of wildlife by volunteering with the Watercress and Winterbournes scheme, which is supported by the National Lottery Heritage Fund.

**Learn more at [www.hiwwt.org.uk/winterbournes](http://www.hiwwt.org.uk/winterbournes) Free Online Talks**

For November, we have three talks about chalk stream invertebrates. These tiny creatures lead fascinating lives and are at the heart of their ecosystems. They also play a crucial role in monitoring the health of these habitats. Join us to learn about these amazing animals – tickets can be found at [www.hiwwt.org.uk/winterbournes](http://www.hiwwt.org.uk/winterbournes).



## Being Seen...

Winter months present a serious hazard to all road users because of reduced visibility due to shorter days/longer nights and bad weather conditions. Road safety organisations recommend that pedestrians wear **reflective strips** (or something white) and carry a **torch** so they can be

spotted by motorists on unlit country roads & lanes.

**Stay lit and don't get hit!**



## Postcard from Binley

It's 7.00 am and this laptop and I have been staring at each other for an hour now. The light is just creeping over the hill to my left and the dark sky is perforated by the pink fingers of dawn over Wadwick. Shepherd's warning indeed as rain is forecast and gone are the groundfrosts of the last two days. In front of me a robin is sheltering beneath the roof of the bird feeder, fluffing himself up into a ball. He looks as bored as I do. Surely something has happened in Binley over this last month? But what? What we need here is another scandal, something juicy like the time... oh, I'd better not. I think at least one of the protagonists is still alive and I'm not even sure the goat involved has passed on. But if she has, RIP Buttercup!

But talking of goats should you ever come out of the house and find one on the roof of your car don't panic! That was the advice given to me by my father in law when I came out of his up at Dunley and found "Daisy" on the roof of my Saab. She was gently coaxed down with carrots and never left a mark but another visitor in a Bentley who lost his temper wasn't so lucky. I do like goats, so much more interesting than sheep who really are the most dreadful bores. I can recall a lady who used to walk around Whitchurch with a number of goats on leads? I'm going back a few years of course but I can't recall her name? I'm very comfortable around eccentrics and wish we had more of them!

I don't know precisely at what age you start morphing into your parents? Late 50's probably, early 60's definitely. I now know the names of a plethora of birds, flowers, trees and cast a discerning eye over sheds. I'm attracted to adverts at the back of the Sunday papers for elasticated waist "slacks". I watch old films and go gooey over Rita Hayworth and Jayne Mansfield. Out has gone T. Rex, Zep and Floyd, in has come Sinatra, Bennet, Artie Shaw. Browsing through my late father's record collection I came across one by Harry Roy and his orchestra from 1931 titled "My Girl's P\*ssy". My mother banned this from the house when I was growing up but my father would set up the gramophone in the garage and play it in there and of course my brother and I knew all the words...

"There's one pet I like to pet  
And every evening we get set  
I stroke it every chance I get  
It's my girl's p\*ssy!"

Give it a listen, it's painfully innocent stuff compared to what is churned out today and you'll find yourself singing it all week!

I picked up a little watercolour the other day of sheep being herded up a lane by a 19<sup>th</sup> century artist named Max Ludby. I have a few of his paintings but this one had a pencil written inscription on the back and I am unable to find it anywhere on the internet so I imagine it was either the musings of the artist or an owner but it is rather lovely and I leave it here...

"Give me the hill road, the bleating of sheep, the clouds the sun and the rain, the graves of dead races, the thatched roofs of living ones, a pipe, a dram and a fire when the day is closing, and a clean bed to lie upon until the sun calls in the morning.

If friends fail the hill road never does. There is nothing in faithfulness like to it, and blessed is the man who has found it."

NA



## SBV Top Tips

Sustainability In and Around Andover

Andover Community Engage (ACE) are a charity organisation which provide:

**Andover Sling and Nappy Library** – for the loan of reusable

slings, carriers and reusable nappy bundles.

Community Fridge – for free surplus food collected from local supermarkets to prevent from going to waste.

**Clothing and Baby Bank** – Clothing exchange. Baby, children and adult clothes, maternity wear, parenting and baby equipment, toys and books. Open: Monday to Friday 10am-3pm at 16-18 Chantry Centre, Andover, SP10 1RL (Temporary)

**Andover Library** – Join to borrow books.

**Hampshire Library Services** – Join to borrow Audio books – sign up and download the BorrowBox App and listen for free.

<https://www.hants.gov.uk/librariesandarchives/library/services/books-and-more/ebooksaudiobooks>

**Charity Shops** – Of which there are a few! Buy second-hand to reduce waste and prevent from going to landfill.

**Too Good To Go App** - Download the App and rescue unsold food from local food outlets, such as Greggs, Nero's, Starbucks, Subway, Pizza Express and local supermarkets. Not free, but big savings can be had.

**Thermal Image Camera** – Find the heat-loss hotspots in your home. Borrow our camera for a small donation from SBV.

KD

**Contact: Nik Cross – [nikcross@rensmart.com](mailto:nikcross@rensmart.com)**

## Go Star Gazing in November

**3 Nov. Jupiter at Opposition** - Giant planet will be at its close approach to Moon & its face will be fully illuminated by the Sun. Brighter than at any other time of year. Visible all night long. Even with good binoculars you should see Jupiter's 4 largest moons appearing as bright dots either side of planet.



**4 Nov. Taurids Meteor Shower** - Longest running minor meteor shower - 5-10 meteors per hour. Runs from Sept 5- Dec 10. Peaking on 4 Nov. Best viewed after midnight from dark location.

**13 Nov. New Moon** - Moon located on same side of Earth as Sun and will not be visible in night sky. Best time to view galaxies and star clusters.

**13 Nov. Uranus at Opposition** - Blue-green planet will be at its closest approach to Earth & its face will be fully illuminated by Sun. Brighter than at any other time of the year. Visible all night long.

**17-18 Nov. Leonids Meteor Shower** - Average shower producing 15 meteors per hour. Peaks on 17-18 but runs from 6-30 Nov. Crescent shaped moon sets before midnight. Best viewed dark location after midnight.

**27 Nov. Full Moon** - Named **Beaver Moon** by Native American tribes. Moon will be located on opposite side of Earth as Sun & its face will be fully illuminated.

RS

**Thursday 16<sup>th</sup> November - Andover Astronomical Society - 7.30pm Hurstbourne Tarrant Village Hall - Supernovae Research - Dr Or Graur - Free first visit**





**'Thank You Drinks'**

The St Mary Bourne Flower Show & Fête committee, friends, sponsors and supporters all met at the *Thank You Drinks* to review the 2023 show and distribute the funds raised amongst village and local charities.

£6,660 of the money raised was allocated as follows:

- Andover Young Carers £400
- Church Youth and Mityana Fund £250
- Enham Trust £200 • Kids on track £500
- St Mary Bourne Community Lunch £200
- St Mary Bourne Bowling Club £100
- St Mary Bourne Cricket Club Juniors £750
- St Mary Bourne Parents and Toddlers Group £100
- St Mary Bourne Primary School £1,000
- St Mary Bourne Parish Community Fund £1,000
- St Peter's Church £200 • Equipment Tent £60
- The Countess of Brecknock Hospice £200
- Welcome to the community £200
- Women's Fellowship £150 • Woodcote Church £100
- Sustainable Bourne Valley £250
- Cricket Pavilion Project £1,000

In addition, this year's **Banksian medal** - normally given to the Flower Show competitor with the highest aggregate score - was awarded to **Toby St Quinton** in recognition of his dedication to the Flower Show over the years. John Banbury, Chairman said *"he comes unasked and without expectation. He finds what needs doing and gets it done. He gives his time generously and repeatedly year after year. His contribution to the Flower Show is often unobtrusive, but valuable and highly appreciated."*



Please continue to feedback ideas and comments so we can grow and improve the show. Our new email address is [smbflowershowandfete@gmail.com](mailto:smbflowershowandfete@gmail.com). We also have a Facebook page (St Mary Bourne Flower Show and Fête) for gardening tips, recipes and anything and everything Flower Show related including free plants, seeds and competitions. Please join the community and help us by getting involved!

AV



The **SMBCC AGM** will take place on Monday **6th November**, 7.30pm at the Village Centre Club Room.

During the winter we have entered an adult indoor league, winter nets for both adults and youth will start in January.

Our attention now turns to planning a future pavilion with the aim to build a long term home for the club. A new pavilion will require significant funding. Please contact the club (or Parish Council) if you have access to any funds or want to help us. Contacts are on the Quiz flyer below.

JO

Please support our Fundraising Quiz Night on Saturday 18th November. There are still some tables available and we need some more raffle prizes and auction items.



**QUIZ NIGHT!**

QUESTIONS ON SPORT, HISTORY, POP CULTURE AND MUCH MORE!

SATURDAY 18TH NOVEMBER  
DOORS OPEN FROM 7:30PM  
STARTS AT 8:00PM

TABLES OF 8 - £80 PER TABLE (£10 PER HEAD)  
Includes 1 red & 1 white wine & sparkling water  
(bring your own food/snacks)

**BAR & RAFFLE & AUCTION**

📞 Jonny Orange 07931 285988 or Jamie King 07432 356254  
[stmarybourne.cc@outlook.com](mailto:stmarybourne.cc@outlook.com) to book a table  
St Mary Bourne Village Centre, SP11 6BE



Andover Chamber Choir returns to **St Mary's Church, Andover** on **Saturday 16th December** for their annual Christmas Concert.

This year's programme is entitled *"The Holly Bears a Berry"* and aims to evoke the spirit of a traditional village Christmas. The music includes many popular carols such as *'The Holly and The Ivy'*, *'Good King Wencelas'* and Harold Darkes' beautiful setting of *'In the bleak Midwinter'*. Less familiar items such as *'Down in Yon Forest'* and *'The Wexford Carol'* plus selected readings will transport us back to days gone by. There are carols for the audience and a lively medley in which the audience will have fun seeing how many carols they can recognise!

The concert starts at **7pm**, tickets are £12 at the door or £10 if purchased in advance from the Lights or Newbury Building Society. No charge for under 16s. Ticket includes interval refreshments. Profits to **Andover Food Bank**.



# EQ TILING

**Elliott Glasspool**

Professional Wall & Floor Tiler  
Porcelain, Ceramic, Natural Stone  
25 years experience

07597 420648

elliottglasspool@hotmail.com



CLOCK BARN.

## Beautiful barn weddings

Clock Barn, Tufton Warren, Whitchurch, Hampshire, RG28 7RB  
01256 630199 [clockbarn-weddings.co.uk](http://clockbarn-weddings.co.uk)



Images by Mia Hooper Photography, Jacob & Pauline Photography and Kit Myers Photography

## Career Transition Coaching

Armed Forces; Professional Sport; Executive Roles

### What is next?

Rebuild your sense of purpose  
Soften the cliff edge

Move forward with clarity and confidence



07989 985452

[lynn@coaching4positivechange.com](mailto:lynn@coaching4positivechange.com)

LinkedIn: Lynn Mead, CPFA

Whitchurch, Hampshire

I bring empathy and build trust  
I provide a safe non-judgemental coaching approach  
To learn more book in for a friendly no-obligation chat



# Tried - Tested - Trusted

*We only offer the best advice and no-pressure sales calls*



**Aluminium, Hardwood, uPVC**

**Triple Glazing Specialist**

**Windows**

**Doors**

**Glazed extensions**

9 Mylen Business Centre, Andover

[sales@kjmgroup.co.uk](mailto:sales@kjmgroup.co.uk)

[www.kjmgroup.co.uk](http://www.kjmgroup.co.uk)

01264 359355



AWARD WINNING

We are proud of our reputation and proven track record



**LONGPARISH PARISH COUNCIL**

Parish Clerk: Sally Lawman  
[clerk@longparish.org.uk](mailto:clerk@longparish.org.uk) or telephone 01264 738716

**REPORT FROM PC MEETING ON 9 OCTOBER**

**PLANNING**

- The Parish Council had **NO OBJECTION** to:
- Demolition of garages to be replaced with garage/workshop at **The Tile House, Longparish**
  - Demolition of garages and erection of part two-storey, part single storey rear extension at **The Tile House, Longparish**

It was noted that appeals against TVBC’s refusal of two planning schemes for retention of gates and fencing at **land southwest of Mill House** had been dismissed, and an enforcement notice has been issued, however the landowner has issued an appeal against the enforcement notice, to be considered by the Planning Inspectorate on 24 October.

**VILLAGE DESIGN STATEMENT**

The Chairman of the Village Design Statement Working Party reviewed the survey analysis document, which has been used to construct a new Village Design Statement for Longparish. The key findings of the survey were that residents valued the preservation of the rural character of the village, together with dark skies. The councillors had the opportunity to view the new draft document prior to the meeting, and this will be made available to a wider audience through the monthly coffee morning and a planned evening event (dates to be confirmed).

**NORTH ACRE**

Councillors agreed to register the two garage blocks in North Acre as Assets of Community Value, subject to approval by TVBC. It was also agreed to opt to participate in HCC’s Part-night Lighting Initiative which would mean that street lighting in North Acre is switched off between 1am and 4am.

**HIGHWAYS**

**Plea to Property owners – it is time to cut back hedges that border roads or footpaths**

Under the Highways Act, roadside hedges are the responsibility of the landowner who has to: Prevent the hedge from overhanging the highway. Prevent hedges from obscuring streetlights and road signs. Clear the road of debris after hedges have been cut.

<https://www.hants.gov.uk/transport/roadmaintenance/roadproblems/treehedge>

Residents can report problem hedges on the Hampshire website, this may result in Highways cutting back the hedge, but the bill will be sent to the property owner, so property owners are well advised to keep hedges cut back from the road or right of way to avoid a hefty bill.

**PARISH COUNCIL MEETINGS**


The next Parish Council Meeting will be held at **7.30pm on Monday 13 November**.

Parish Council Meetings are public, and parishioners are also welcome to speak on specific agenda items by prior arrangement with the Chairman, or on any matter as part of the Period for Public Speaking.

Chairman: Mr Peter Hull - email [peter.hullpc@longparish.org.uk](mailto:peter.hullpc@longparish.org.uk)  
 Clerk: Miss Sally Lawman - Tel 01264 738716, or email [clerk@longparish.org.uk](mailto:clerk@longparish.org.uk)

*Minutes of all previous meetings are available on the current or archived Longparish website*

**Autumn Village Clean Up**  
**The next big clean is November 4th, 10 am**



Activities to include stream clearing, clearing paths, litter picking, tidying bus shelters and other village open spaces and facilities.

**Volunteers are welcome on the day, but if you are able, let Jo Clare know beforehand, it would help to plan the day. [joanelclare@gmail.com](mailto:joanelclare@gmail.com)**



**Tuesday Talks**  
 Our second talk of the season is on **Tuesday 14th November 2023**  
 And will be given by **Dodie Marsden**  
**'Adventures in Uganda'**  
 Dodie has visited Uganda numerous times and has many fascinating stories to tell!  
**The talk will begin at 7 p.m.**  
**Village Hall doors open at 6.30 p.m.**  
 Admission is free but donations are welcome to offset the cost of hiring the Hall.  
 There will be a bar.



**Longparish Gardening Club**  
**Tuesday, 28th November 7 pm**  
**Longparish Village Hall. SP11 6PB**



'Christmas Party and Gardening Quiz' Raffle towards the cost of future speakers.

There will be no meeting for the LGC in December.

Any queries please contact **Rosie Lowry 01264 720325** or **Marion Bell 01264 720205**

Please bring a plate of food to share.



### Esseborne Manor Hotel & Restaurant

Family run business offering a warm welcome and the best food in the area.

Daily lunches with canapes & wine  
A la carte dinners  
7-course tasting dinners  
Sunday lunches  
Vintage afternoon teas



Perfect for private functions & weddings

Hurstbourne Tarrant SP11 0ER,  
[www.esseborne-manor.co.uk](http://www.esseborne-manor.co.uk), 01264 736 444



## Chimney Sweeps

HETAS Accredited

Tel: 01264 339331 Mob: 07833 368350

[www.brushesup.co.uk](http://www.brushesup.co.uk)

## G&S Lark Tree Services

Andover (01264) 874 464  
Amesbury (01980) 670 226  
Mobile 07850 849 960



Tree Care ~ Firewood ~ Hedge cutting

[graemelark@outlook.com](mailto:graemelark@outlook.com)  
[www.larktreeservices.co.uk](http://www.larktreeservices.co.uk)

## TW GLAZING & WINDOW REPAIRS

01264 782 211/ 077 652 60922

[www.twglazingandwindowrepairs.com](http://www.twglazingandwindowrepairs.com)

**misted double-glazed units**  
**cat-flaps into UPVC and glass**  
**glass repairs into all existing frames**  
**hinges, handles, locks and gaskets**  
**greenhouse glass and faceputtying**  
**FREE QUOTES AND ADVICE**

# TEST VALLEY GARDEN MACHINERY LTD

*— Never knowingly undercut —*

INTRODUCTORY OFFER:

## FREE COLLECTION & RETURNS

LOCAL RESTRICTIONS AND TERMS APPLY

### LOCAL ROBOT MOWER EXPERTS FOR ALL YOUR REQUIREMENTS

HAMPSHIRE'S LEADING  
ROBOT MOWER SUPPLIER!

Tel: 0800 107 3263

[www.tvgm.uk](http://www.tvgm.uk)



REPAIRS \* SALES \* SERVICE



**Wherwell Home Guard Club**

**6<sup>th</sup> Annual Bazaar**



**Saturday 18<sup>th</sup> November 2023**

**11 am - 2 pm**

**Christmas Gifts ~ Craft Stalls**

**Charity Christmas Cards ~ Notecards**

**Jams & Pickles ~ Handicrafts ~ Xmas stockings**

**Tea, Coffee, Cakes ~ Tombola & more**

**FREE admission**

**Freelance stallholders - please bring CASH if possible!**

**Wherwell Home Guard Club, The Old Hill,**

**SP11 7JB, 07799 548 525**



**St Nicolas Church 100 Club**

**Coming soon to Longparish – It’s on the way!**

**Launch Day on St Nicholas Day itself - 6<sup>th</sup> December 2023**

In last month’s Hill and Valley, we advised that we are setting up a Heritage Fund in the form of the ‘St. Nicholas 100 Club’, for the specific purpose of maintaining the building, in order to keep it in good repair for the sake of the generations to come.

Watch out for your letter inviting you to join, which will be landing, together with the relevant forms to complete, through your letterbox very soon after publication of this November issue. Forms should be returned by December 6<sup>th</sup> to make sure of entry into the December draw. Draws will be made monthly on the quarter day.

It works like this: Membership is set at £5.00 per number per month. There is no limit to the numbers you can purchase. Prizes will be allocated on a percentage basis. First prize will be 25% of the total income for the month, second prize 15% and third prize 5%. For example, with a membership of 100, the amounts would be:

- First prize: £125
- Second prize £75
- Third prize £25

If you have any queries at this stage, please contact: **John Young, Stewardship Officer, St. Nicholas 100 Club**

**Tel: 01264 720233**  
**Mob: 07860 630489 or**  
**Email: [jayoung1322@gmail.com](mailto:jayoung1322@gmail.com)**

We would be extremely grateful if you would consider becoming a member of the club and supporting your parish church in this way.

**N.B.** Again, just a reminder that the church is open each day from 9.30am to 5pm, and if you haven’t been inside for a while, it has recently been decorated and is well worth a visit. It is beautiful and it belongs to you.

**St Nicholas Church**  
**Christmas Fayre**  
**SATURDAY 9TH DECEMBER**  
**2PM - 4PM**  
**LONGPARISH COMMUNITY HALL**  
**& ST NICHOLAS CHURCH**

**CHILDRENS GAMES**      **PERFORMANCES FROM**  
**LONGPARISH SCHOOL CHOIR**  
**AND LONGPARISH VILLAGE CHOIR**

**GRAND RAFFLE**

**LOTS OF STALLS**

**TOMBOLA**      **VISIT FATHER CHRISTMAS IN HIS GROTTA**  
**£2 PER CHILD**

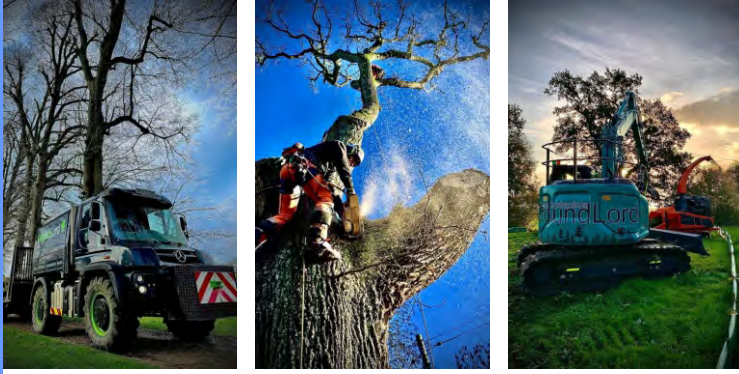
**CRAFTS FOR ALL TO ENJOY**

**ENTRY £1 PER ADULT**  
**CHILDREN FREE**

**FOR MORE INFORMATION**  
**PLEASE CONTACT LPCHRISTMASFAYRE@OUTLOOK.COM**

Made with PosterMyWall.com





## GroundLord

THE PROFESSIONAL  
ARBORISTS YOU CAN TRUST

TREE SURGERY | SITE CLEARANCE  
ECOLOGY WORKS | FORESTRY

01256 541414  
www.groundlord.com



## TUCKER

Kitchens, Furniture & Joinery

Est: 1976

Unit 9 Towergate Industrial Park  
Colebrook Way, Andover, Hants, SP10 3BB  
t: 01264 365113 www.tuckerjoinery.co.uk



## SW Window Cleaning

Exterior & Internal windows

Gutters, soffits & fascias

Conservatory roofs

Cladding

Fully insured

Sills & frames cleaned

Speak to Steve on 07968 524874

swwindowcleaning@gmail.com

www.swwindowcleaning.com

## CLEAN OVENS

DOMESTICS LTD

- AGAS • HOBS • OVENS • RANGES
- EXTRACTORS • BBQS • MICROWAVES

Eco-friendly materials used - Experienced staff  
Covering Hampshire & Wiltshire

Call or email Dave

tel: 0800 707 6629 mob: 07563 693145

email: [cleanovensdomestic@gmail.com](mailto:cleanovensdomestic@gmail.com)

## M.J. SLY

MONUMENTAL SCULPTOR

Andover Memorial Studio  
6 Swan Court,  
Andover, Hampshire.  
SP10 1EZ  
Open by appointment only

QUALITY MEMORIALS AT  
WORKSHOP PRICES FREE  
BROCHURE

Choose a NAMM Member  
www.mjsly.co.uk

email: [info@mjsly.co.uk](mailto:info@mjsly.co.uk)

Telephone 01672 516797  
Pelham Court, Malborough



Mobile knife, scissor & tool sharpening services

No call out charge

Call Becky on **07393 600630** to book a visit

More details can be found on

[www.onpoint-sharpening.co.uk](http://www.onpoint-sharpening.co.uk)

To Advertise in this Magazine email: [hillandvalley@btinternet.com](mailto:hillandvalley@btinternet.com)



**LONGPARISH WILDLIFE**

Two of our main winter visitors are the Redwing and Fieldfare. They arrive from Scandinavia, in their thousands to escape the harsher winters. They have already started arriving in the United Kingdom and will gradually move across the country from the east. When they first arrive, they are scared of humans, but as the winter wears on they become less frightened. If you have a Yew tree in your garden or close by, you are more than likely to see one or the other or both. They like to eat the Holly and Yew first and then move onto the Hawthorn, when these run out, they move on but will come back and eat the Ivy berries.

Redwings are similar to the Song Thrush in size with a brown back and a white stripe just above the eye, speckled creamy white breast and red under its wing.



The Fieldfare is more Mistle Thrush in size with a grey head and rump, reddish brown back and heavily marked underparts, yellow beak with a black tip.



If you have fallen apples in your garden leave them for the birds to eat. If we get a cold spell and the ground is frozen, you will be surprised at what birds you will see.

I saw my last Swallow on the 16<sup>th</sup> of October, a full six weeks after our local ones left. These last swallows are probably ones from the north of Scotland.

**Chris Bowman**



**Longparish Little School**

Thank you for everyone who supported our fundraising Pumpkin Competition. There were some magnificent carved, decorated and very large home grown pumpkins.

Over the past few weeks, we have been busy exploring autumn.



One of our activities was visiting a garden of Jeremy and Maggie where we turned our apples into apple juice using an apple press. Additionally, we took some food to the church for the Andover Food Bank, followed by a harvest celebration with Reverend Russell and Sarah. Since it was a beautiful

day, we had the celebration outside in the church yard. We had a lot of fun listening to a story, hunting acorns, and making leaf squirrel pictures. In Forest School, we used a conker clamp and palm drill to make holes in the conkers, allowing us to create conker snakes or necklaces.



If you would like to see some photos of all the exciting things we do at Little School, you can go to our website [www.longparishlittleschool.org.uk](http://www.longparishlittleschool.org.uk) or our Facebook page <https://www.facebook.com/longparishplaygroup>

We are now taking bookings for September 2024. If you would like to come and look around, please give us a call on 01264 720455.

**FRIDAY LUNCH CLUB DATES**

**Longparish Village Hall 12-2pm**

**Friday 24<sup>th</sup> November**

**Friday 15<sup>th</sup> December 12-2.30pm for Christmas Lunch!! Pre Booking is essential!!**

To book lunch and or transport for any date ring **Andrea 720 457 or Christian 720 398**





Pest Problems? Call the experts!

## TEST VALLEY PEST CONTROL

RATS. MICE. SQUIRRELS. MOLES. RABBITS. BIRDS.

CLUSTER FLIES. FLEAS.

BED BUGS. ANTS. WASPS.

CLOTHES MOTHS, ETC...



Office: 01256 771632

Mobile: 07718986858

All aspects of pest control undertaken

## Blackwell & Moody

A full range of memorials on display. Available in granite, marble, stone and slate. Existing memorials restored and cleaned. A personal individual service.

Magdalen Masonry Works,  
Alresford Road,  
Winchester, Hants  
SO21 1HE

Tel: 01962 852 476

## Dave Taylor Auto Repairs

Green Lane, Stoke  
SP11 0PF

All work undertaken including

- Bodywork
- Paintwork
- Servicing
- MOT prep work
- Welding and repairs to MOT standard

**All makes, models, light commercials**

**01264 736279**

Home: 01264 323571

Mob: 07792 473174



## Soil Improving Mulch

Packed with essential nutrients, our mulch adds vital goodness and organic matter to your garden soil. Free from peat and waste. Approved for organic use.



**01264 554433**  
**FREE delivery**

**Order online at [www.apsleyfarms.com](http://www.apsleyfarms.com)**



## RESTORATION SERVICE FURNITURE | ANTIQUES | OBJET D'ART

By experienced craftsman in Barton Stacey

- Repairs
- Polishing
- Upholstery
- Marquetry
- Floors
- Banisters
- Leather Tops
- Projects

Phone Tim Williams 07565 591481

Email: [trwilliams71@gmail.com](mailto:trwilliams71@gmail.com)

EST. HM 1987

## HAVEN MEMORIALS

MONUMENTAL MASONS



A local family run business with over 30 years experience creating bespoke Headstones. We pride ourselves on our friendly service and impartial advice.

Contact us today to discuss your requirements. Let our family help yours in this time of need.

[www.havenmemorials.co.uk](http://www.havenmemorials.co.uk)

[admin@havenstone.co.uk](mailto:admin@havenstone.co.uk)

Fleet: 01252 811691

Basingstoke: 01256 811829

## YorkAssociates

Architectural Design Services  
Planning Consultants

- Full design services
- Planning applications for new houses and extensions
- Applications for Listed Building Consent
- Building Regulations submissions



**Andrew Steeden MRICS**  
**Chartered Building Surveyor**

Telephone: **07393 025574**

[andy.yorkassociates@gmail.com](mailto:andy.yorkassociates@gmail.com)

[www.yorkassociates.org](http://www.yorkassociates.org)

## Satellite & aerial



### Satellite & Aerial:

- TV Aerial Installations and Repairs
- Sky Satellite Installations
- Freeview & FreeSat
- FM & DAB Radio Installations
- Extra TV, Satellite & Telephone points
- Commercial (IRS, CCTV)
- European & Motorised

### Sound & Vision:

- Home Entertainment Systems
- Home Cinema
- Multi Room Audio Visual Installations
- LED, LCD, Plasma TV's & Projectors
- Home Automation Systems
- Lighting Control
- Commercial

For a friendly and professional service please call 01264 934 824, email [info@onedegreewest.tv](mailto:info@onedegreewest.tv) or visit [onedegreewest.tv](http://onedegreewest.tv)



**one degree west**  
satellite & aerial

## KMSERVICES

Est. 1997



**Painting & Decorating Specialists**  
**Replacement Guttering, Cast Iron & Plastic**  
**Gutter Cleaning & Maintenance**

Tel: 01256 892122 Mobile: 0777 562 4488

Find us at [www.kmservices.info](http://www.kmservices.info)

All work is tailor made to your specifications and carries a workmanship warranty



### Friends of Longparish School

Thank you to everyone that came to our Quiz and AGM in October. At the AGM, the new committee was voted in. The

FoLS Trustees for 2023-24 are Jo Allam (Chair), Beccy Witcher (Treasurer) and Alexandra McWalter (Secretary).

### The Longparish Lookout Appeal

Our fundraising campaign for a new outdoor classroom and improved trim trail is off to a flying start! Thank you to everyone that has donated. In particular, thank you to Richard Williams and the Longparish Fete Committee for their generous donations.

If you would like to support the project, you can donate online at our Go Fund Me page (visit [gofund.me/f74def35](https://gofund.me/f74def35)). Do you work for a company that offers charity funding? Please put us in touch (email [chairfols@gmail.com](mailto:chairfols@gmail.com)).

### Christmas Wreath Making Workshop

Join FoLS and Hampshire Floral Co for an exclusive Christmas wreath making workshop on Saturday 2 December. Book at [www.pta-events.co.uk/longparish](http://www.pta-events.co.uk/longparish)



### Christmas Jumpers



We are running a second-hand Christmas jumper sale at the end of the month. If you have any to donate, please leave them at school reception, or we can collect. We particularly need larger sizes for the older children.

### Have you been a winner?

Our fundraising lottery has been running for a year now, and one of our supporters has won a prize every week! For your chance to win, sign up at [www.yourschoollottery.co.uk](http://www.yourschoollottery.co.uk) and support Friends of Longparish School. For more information about FoLS visit [www.pta-events.co.uk/longparish](http://www.pta-events.co.uk/longparish) or follow us on Facebook at [fb.me/FriendsofLongparishSchool](https://fb.me/FriendsofLongparishSchool)

**Jo Allam, Chair** ([chairfols@gmail.com](mailto:chairfols@gmail.com))

### Barton Stacey WI

As the Festive Season approaches, Barton Stacey WI has plenty to enjoy. Our meetings are held on the last Thursday of the month at 7.30 in Barton Stacey Village Hall (Opposite the Swan Inn). We welcome women of all ages from 18 upwards! Before the next meeting, there will be a workshop to create some pretty patchwork decorations plus an extra evening of decorating small cakes. The monthly meeting will be held on 30 November, when we will enjoy Jen Best of Beaker Button, at the Fairground Centre, demonstrating Needle Felting Baubles. We are hoping Jen will help us learn this craft with a hands-on part in the evening.

Our meetings are very informal, friendly, and noisy too! We enjoy coffee and homemade cake after the speaker so that there is time to have a good chat and get to know others in the hall.

It's not all about craft in the WI as we have a good cross section of interests covered in our programme, plus we try to have an activity or two during the month. We've been hearing about the rivers and how we can be more aware of the issues that cause problems with rivers and particularly the chalk streams that are in our midst.

We will be at the Barton Stacey Church Fete, serving teas but also having a Blind Date with a Book. Please come and say hello and we hope to welcome you to our meetings.

### Longparish Harvest Festival Lunch



“Harvest Lunch festive party on Sun 8th Oct organised and cooked by Pippa Sawyer and friends”



### LCA Coffee Morning!

**November 10th, at the Plough**  
10 am – Noon

Coffee and Biscuits £1 per person.





Call us on 01264 720069 or book via the website  
[www.ploughinn.org](http://www.ploughinn.org)  
 Email: [mark@ploughinn.org](mailto:mark@ploughinn.org)  
**A warm welcome to The Plough – owned by the Community!**

Billy cooked up a fantastic 'Greek Nite' feast in October and we've had some great feedback which we're very proud of. Well done Billy and all the staff!

**Coming up this Autumn**

We're planning a Quiz Night for November! Look out for details on the website [www.ploughinn.org](http://www.ploughinn.org) and on the blackboards in the pub.

Our special festive 'Christmas Fayre' menu is now available from the 27th of November to 23rd December, please do take a look on our website.

And remember our elegant **River Room** which makes a terrific venue for Christmas parties or Special Events, (seats up to 24 people.) Call us for more information.



**Staff Wanted**

We're looking for talented and enthusiastic staff to work in our Community Pub, both front of house and in the kitchen. Check out our website for jobs and do contact us if you, or anyone you know, might be interested.

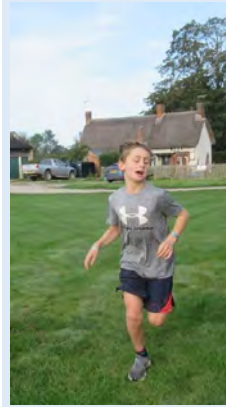
With best wishes and grateful thanks to our customers and supporters,  
 from the team at The Plough

**LCA - L2SOTM - The Longparish Second Sunday of the Month handicap race**

Our first three finishers were young runners at the October race. New runners, Charlie and Sebastian were first and third and Charlie was an amazing ten minutes inside his handicap. Wow!

But you can't win a trophy off an estimated handicap, so our Rising Star was Freddie Brown who came second in a new personal

record time. Most Improved Man was Luke Pierce in 4th place. Well done both.



**Freddie's flying finish**

Thank you very much to Freddie's Dad, Matt, who was head marshal, to his Mum, Danielle, who ran with him and Sebastian as their accompanying adult, to Charlie who took the photographs (I think it was the first time he had used a 'real' camera) and his Dad, James, who accompanied him. Thanks also to the Cricket Club for the lovely venue.

The next race is on Sunday, 12 November starting at 9am. New runners are always welcome. You don't have to be fast. Please do give me a call or drop me an email if you'd like to join us. For more information, please see <http://l2sotm.longparish.org.uk/index.php>

Jeremy Barber  
 01264 720459 [mrjeremybarber@gmail.com](mailto:mrjeremybarber@gmail.com)

**Longparish Choir Autumn Winter Schedule**



Remembrance Service  
 Sunday **12 November 10.50am** in the cemetery then **11am** at **St Nicholas Church Longparish**



St Mary Bourne Sip and Shop night  
**8pm Wednesday 29th November**  
**Village Hall, St Mary Bourne**

**Longparish Christmas Fayre**  
**3pm Saturday 9th December**  
 FOLLOWED SWIFTLY BY ...



Carols at **The Plough**  
**6pm Saturday 9th December**

Nine Lessons and Carols by Candlelight  
**6pm Sunday 17 December**  
**St Nicholas Church Longparish**



Carols at **The Cricketers**  
**6pm Saturday 23rd December**



## LONGPARISH CRICKET CLUB

Longparish Cricket Club is delighted to announce that club legend Justin Jackman has won the category of Outstanding Contribution - Services to Coaching in Hampshire for the ECB Coach Awards.



The criteria were based on the following: This person is the life and soul of your club. They have dedicated a significant amount of time to coaching and have contributed to growing the

game. It is a person who has dedicated themselves to coaching and making a difference to the players, created numerous opportunities, and contributed to increasing participation of players. Justin is the Junior Coordinator at Longparish CC and has held this position for 25 years. During his time at Longparish CC Justin has been the driving force behind the establishment of both the Junior and Senior competitive sections at the club. Many juniors have graduated into the adult teams, which is a legacy of Justin's coaching. He has built up Longparish CC into the successful club it is today based on the foundations of a strong youth team set-up which he established. Longparish CC owes Justin a huge debt of gratitude for his outstanding contribution during the past 25 years to the club and this award is richly deserved.

The annual LCC Christmas Quiz is being held at the Longparish Village Hall on Friday 1st December 2023 starting at 7.30pm. Tickets are £5 per person and available in advance by emailing [longparishcc@gmail.com](mailto:longparishcc@gmail.com).

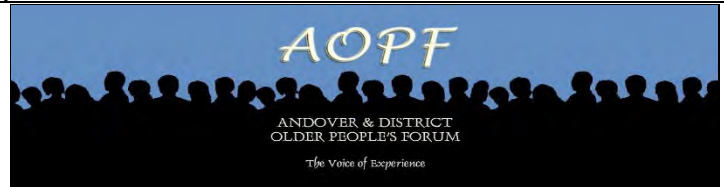
Max team size of 6. Drinks and food will be available to purchase and there will be a raffle on the night. Please come along, have some fun and raise some



funds for the club.

Finally, Jonathan Palmer treated the victorious Longparish CC team, winners of the Woodcock Cup, to a celebratory

meal in The Cricketers in September which was thoroughly enjoyed by all. Our thanks to Jonathan for arranging.



In October the Andover & District Older People's Forum held an event to celebrate International Day for Older People and on the 5<sup>th</sup> October this year an Information Day on Diabetes took place. You may have seen it advertised or even attended yourself. It was a most successful day and AOPF thanks the two keynote Speakers, Dr Hermione Price, Consultant Diabetologist and Local GP Dr Sarah Sierens who were so informative on the subject and answered lots of questions from the floor. With visiting display stalls, food taster sessions, raffle, and refreshments it was a really good event.

Now to our next get together. It will be held at our usual venue:

**ANDOVER BAPTIST CHURCH, CHARLTON ROAD, ANDOVER SP103JH**  
**On THURSDAY 23<sup>rd</sup> NOVEMBER 2023**  
**Doors open 2pm for 2.15pm start to 4.15pm close**

This time we will be joined by Claire Godding of The Countess of Brecknock Hospice Trust who will be telling us about all their very varied work in support and care.

There will be a Raffle and Refreshments and good company and since this will be the last meeting of 2023 perhaps a nod towards Christmas.

**So do come and join us. Look forward to seeing you**

For more information about the Andover and District Older People's Forum contact:  
**Email [andover.opf@gmail.com](mailto:andover.opf@gmail.com) -Telephone 01264 737251** Or find us on Facebook

Have you noticed the Hidden Flamingo? It has been sneaking around the Longparish pages of the Hill & Valleys. The flamingo can be found hidden in pictures or text in every issue.





**Doug Hopkins**  
~ Joinery ~

Purpose made joinery and cabinet making to your specifications

Tel: 01264 736 705  
(Stoke)

Mob: 07857 692 445



**Matt Townsend**  
*Landscaping and Fencing*

Call 07825710750

*Over 15 years' experience*  
*Fully Qualified and Insured*

Landscaping  
Fencing  
Patios  
Turfing  
Decking  
Concrete Bases

[www.matttownsendlandscapingandfencing.com](http://www.matttownsendlandscapingandfencing.com)

**BARSU GrassWorks**

**Garden Maintenance**

Grass Cutting  
Lawn Treatment  
Small Hedge Cutting

For Competitive Rates call

**Barry**

☎ 01264 393803

**Mobile: 07876 178865**

or email:

[barsu79@ntlworld.com](mailto:barsu79@ntlworld.com)

**FREEDOM**

BESPOKE

BIFOLDING, SLIDING, FRENCH & RESIDENTIAL DOORS, WINDOWS & ROOF LIGHTS



☎ 01264 301 302

✉ [sales@freedombespoke.co.uk](mailto:sales@freedombespoke.co.uk)

📍 Visit our showroom at Andover Down, SP11 6LJ



**Hayward**  
**Brick and Flint**

Restoration, Alterations, New build

**Adrian Hayward**  
Bricklaying And Flintwork Contractor

Groundworks, Fencing,  
Patios, Chimney Rebuild  
Landscaping, Drives  
Drainage, Damp proofing,

10 Hirst Copse  
St Mary Bourne  
Andover  
sp116st

tel 07833691542  
[jinxzoolander@hotmail.co.uk](mailto:jinxzoolander@hotmail.co.uk)



RIBA #  
Chartered Practice

MATHEWSON WATERS ARCHITECTS

WHITCHURCH 07540 726562 [www.mw-architects.co.uk](http://www.mw-architects.co.uk)





## WEATHER SEPTEMBER 23

Rainfall this month	87mm. =. 3.42ins
Total for 2023	757mm. =. 29.80ins
Total for 2022.	397mm. =. 15.62ins
Max temperature	34.2c =. 93f (9th)
Max night temp.	18c. =. 64f (10th)
Min temperature.	5c. =. 41f (28th)

### SEPTEMBER

Met. Says a heatwave this month. Max temperature reached 30+ for 7 days 4-10<sup>th</sup> September. Not unusual for July and August but for September...it was the longest run of days 30+ on record!

## Ladies Coffee Morning

Helen Mehaffey will be holding this month's coffee morning on Thursday 16<sup>th</sup> at The Limes (opposite to Equestrian Centre).

Everyone Welcome!

All ages welcome from 10.15 am until noon.

For more information or offers to hold a coffee morning, please contact Susie Sorby (tel 892665 or email: sbsorby@hotmail.com)

## The Hurstbourne Priors Gardening Club

Thank you to everyone who came to our second session which focussed on sowing perennial seeds, the Lupin have already germinated.

This month's meeting will be on Wednesday 8<sup>th</sup> November when we will be potting on the cuttings that we took in September and have now rooted.

We will meet at Hurstbourne Priors House at 7.30 – don't worry we will be inside. If you could let us know if you are able to join us it would be helpful: [clarejread@icloud.com](mailto:clarejread@icloud.com) or 07711 917375.

December's meeting date will be included in next month's H&V.

Clare, Kat and Rosie



## Remembrance Sunday

Remembrance Sunday

Hurstbourne Priors' Service of Remembrance is on Sunday 12th November, at 10.50am at St Andrew's Church.

The collection from this service will be donated to the Royal British Legion (Poppy Fund). There will be Sunday School with activities for the children, and all are welcome.



## Harvest Supper

Our numbers were too few for it to be worth using the Village Hall, but the Harvest Supper still went ahead, with all 14 of us able to fit round Ann and Crispin Orr's dining room table.

We had a most enjoyable evening, and we will be able to make our usual donation to the Mityana Projects Trust. For the last few years, the donations from the Hurstbourne Priors Harvest Supper have been used to support the Kindergarten which has over 135 pupils.

Thank you, Ann and Crispin, for your warm welcome and to our wonderful cooks for our traditional meal of sausages, mash and red cabbage, not to mention the brownies and the rhubarb and blackberry crumble!





### Esseborne Manor Hotel & Restaurant

Family run business offering a warm welcome and the best food in the area.

Daily lunches with canapes & wine  
A la carte dinners  
7-course tasting dinners  
Sunday lunches  
Vintage afternoon teas



Perfect for private functions & weddings

Hurstbourne Tarrant SP11 0ER,  
[www.esseborne-manor.co.uk](http://www.esseborne-manor.co.uk), 01264 736 444



## Chimney Sweeps

HETAS Accredited

Tel: 01264 339331 Mob: 07833 368350

[www.brushesup.co.uk](http://www.brushesup.co.uk)

## G&S Lark Tree Services

Andover (01264) 874 464  
Amesbury (01980) 670 226  
Mobile 07850 849 960



Tree Care ~ Firewood ~ Hedge cutting

[graemelark@outlook.com](mailto:graemelark@outlook.com)  
[www.larktreeservices.co.uk](http://www.larktreeservices.co.uk)

## TW GLAZING & WINDOW REPAIRS

01264 782 211/ 077 652 60922

[www.twglazingandwindowrepairs.com](http://www.twglazingandwindowrepairs.com)

**misted double-glazed units**  
**cat-flaps into UPVC and glass**  
**glass repairs into all existing frames**  
**hinges, handles, locks and gaskets**  
**greenhouse glass and faceputtying**  
**FREE QUOTES AND ADVICE**

# TEST VALLEY GARDEN MACHINERY LTD

*— Never knowingly undercut —*

INTRODUCTORY OFFER:

## FREE COLLECTION & RETURNS

LOCAL RESTRICTIONS AND TERMS APPLY

### LOCAL ROBOT MOWER EXPERTS FOR ALL YOUR REQUIREMENTS

HAMPSHIRE'S LEADING  
ROBOT MOWER SUPPLIER!



Tel: 0800 107 3263

[www.tvgm.uk](http://www.tvgm.uk)

REPAIRS \* SALES \* SERVICE



**Pre-loved children's s sale**  
**Clothes, toys, shoes, baby items**  
**Saturday November 11th**  
**10am-1pm**

**Hurstbourne Priors Village Hall, RG287SB**  
**Proceeds to Hurstbourne Priors Playground Project**  
**Donations by Nov 9th, txt/whatsapp 07748598890**

**Fireworks and Bonfires**

If you're planning to have a bonfire to celebrate Guy Fawkes night or to let off fireworks at any time, then this is a gentle reminder to ask that you please let your neighbours know well in advance.

Our community includes plenty of children, dogs, horses and other animals, so we are sure everyone will appreciate being told so that they can take precautionary measures to ensure those with four legs enjoy the night just as much as you.

Fireworks and bonfire sparks can travel a surprisingly long way and so do also bear in mind The wind direction and the proximity of neighbouring properties.

As a village we have a few thatched roofs which don't tend to respond well to fire, so it's also worth checking your home insurance policy for that third party risk.



**Halloween**

Historically, Halloween was celebrated for two very different reasons. One reason was to celebrate the end of the harvest season, which was called Summer's End or Samhain, and the other reason was to celebrate the two Christian holidays called All Hallow's Days.

The children of Hurstbourne Priors will be dressing up in their spookiest costumes on Sunday 29<sup>th</sup> of October trick or treating at those homes that have indicated they would like the children to call.

Pease if you are passing through the village could you take extra special care!





Serving the local community for over 15 years

# Complete Services

Plumbing & Heating Engineer  
OFTEC registered & Grant approved  
24 hour call-out service

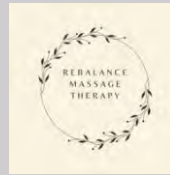
Registered  
Oil Heating  
Business



Contact 07990 897372  
info@complete-h2o.co.uk  
www.complete-h2o.co.uk

Slow down,  
take a breath  
and begin to feel  
restored

Appointments  
Monday to Saturday



Deep relaxation..

Holistic Swedish Massage &  
Facial Treatments

[www.rebalancemassage.org](http://www.rebalancemassage.org)  
Contact Rachel  
07443 226813  
rachel@rebalancemassage.org  
Book online

Apple Tree Cottage, Forton, Andover SP11 6NU



## RAMPTON ELECTRICAL CONTRACTORS

your local professional electrician covering  
all areas of Wiltshire & Hampshire

All domestic & commercial electrical  
works undertaken - Bespoke Lighting Specialist

**01980 734004**

[Michael@Ramptonelectrical.co.uk](mailto:Michael@Ramptonelectrical.co.uk)

## P C BUTLER BRICKWORK

General and Traditional Building  
Roofing, Maintenance & Repairs,  
Painting & Decorating

*No job too small*

**01256 781830 or 07833 586250**

[paulbutler3@hotmail.co.uk](mailto:paulbutler3@hotmail.co.uk)



We can help you meet all your pet and  
equine healthcare needs, with professional  
and caring staff who can treat your animal  
at a time that suits you. Our vets offer an  
emergency service giving you 24 hour  
reassurance.

*... we're here to listen*

**24 hour phonenumber: 01635 254544**

### OUR SURGERIES:

Burlins Surgery, Burlins,  
East Woodhay, Newbury,  
Berkshire, RG20 0NU.

Foxhold House Surgery,  
Crookham Common, Thatcham,  
Berkshire, RG19 8EL.



THE  
**COACHHOUSE**  
VETERINARY SURGEONS

[www.coachhousevets.com](http://www.coachhousevets.com)

## Robert Allnutt Building & Garden Maintenance

Based in Longparish available for indoor  
and outdoor projects or maintenance  
including carpentry and fencing.

See my facebook page  
for information and photos

**Mobile 0773 3212 809**



**MOSAÏQUE**  
EASTFIELD HOUSE

BOOK ONLINE  
[www.mosaïquebeauty.com](http://www.mosaïquebeauty.com)



Relax in beautiful Longparish!

**Facials**  
organic & specialist advanced  
vegan skincare.

**Waxing**  
Mooeys Masters & Lycon  
premium waxes qualified salon

**Lashes & Eyebrows**  
including Tinting, Lash Lift  
& Brow Lift

**Manicure & Pedicure**

**Gel Polish**

**Massage & Hot Stones**

**The Dorn Method**  
gentle back & joint pain  
relief.

**Mineral Makeup**

**Colour & Style Analysis**

Eastfield House,  
Forton, Longparish SP11 6NN

T: 01264 720 797

M: 07785 268 886

E: [bp@mosaïquebeauty.com](mailto:bp@mosaïquebeauty.com)

W: [www.mosaïquebeauty.com](http://www.mosaïquebeauty.com)

## St Andrew's Church Merchandise – The Perfect Christmas Gift!

St Andrew's Church has a number of items for sales which have been specially created from watercolour paintings and photographs representing different views of our church.

All profits from the sale of these items are in aid of St. Andrew's Church.



1 tea towel and 1 mug £15

Items will be on display at all services



- Bone China Mugs £9.99 ea.
- Christmas Cards £5.00 ea
- Tea Towels £7.50 ea
- Dedicated Hymn Book £9.75 ea

## The Andover Food Bank

The Andover foodbank would like to thank anyone who has donated to us in the recent weeks. Demand is still incredibly high, and we are therefore most grateful for your generosity.

This week the Andover foodbank is in need of the following food and non-food items:-

- Tinned vegetables
- Chocolate bars
- Pasta Sauce
- Tinned Meat
- Longlife Fruit Juice
- Longlife Milk
- Tinned Fruit
- Deodorant
- Laundry Pods
- Cleaning Spray
- Dishcloths and scourers



## Making Sure Everyone Experiences Christmas Joy with Andover Food Bank!

Christmas is fast approaching and with 1 in 5 families living below the poverty line it can be a challenging time of year for some families.

The Andover foodbank needs your help to support those in need this Christmas. You can help by donating a Christmas gift box or a Christmas hamper.

Gift boxes and hampers help to alleviate the many financial pressures and allow people to celebrate Christmas rather than exist through it. A mother said: *'It took the stress out of Christmas a bit. The kids loved their items'*, and another family said *'you have just lifted a huge weight off my shoulders'*.

For more information please look on our website.

The **closing dates** for donations are as follows-

**Christmas Gift boxes – Donations need to be in by 3<sup>rd</sup> November**

**Christmas Hampers – last date for hamper food 26<sup>th</sup> November**







**T C SCOTT**  
ST MARY BOURNE  
GARAGE LTD

**MOT** Test Station

Repairs & Servicing of all makes of vehicle.

Diagnostics

Welding to MOT standard

**Phone (01264) 738606**

**PERFECT PADDOCKS**

Complete Maintenance  
Service incl Large Lawns

- Water Pipes and Cables installed
  - Land Drainage Diggers and Dumpers 1-20 t
- Fully Licensed Waste Carrier  
Other services available

Just ask David & Suzanne  
Egbury Road, St Mary Bourne

**07759 607633**

dspagricontracting@gmail.com



**COLLARD**

**DEMOLISH | DISPOSE | RECYCLE**

Having a house clearance or work done?



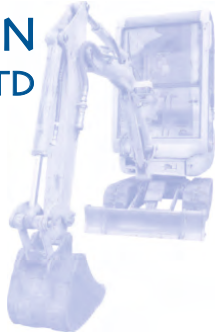
**Skip the tip and hire a skip!**

Book your skip hire online with friendly next day service!

**www.rcollard.com**

**01264 720 257**

**GETHERINGTON**  
CONTRACTING LTD



**01256 893150 / 07901 771080**  
**www.gecontracting.co.uk**

**LANDSCAPING • GROUNDWORK • PLANT HIRE**

**How to contact your Member of Parliament**  
**Kit Malthouse**

@ kit.malthouse.mp@parliament.uk

01264 401401

Or write to me at my constituency office:

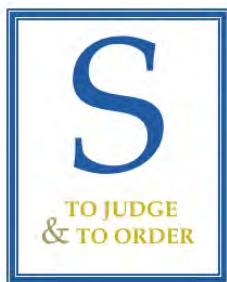
✉ 2 Church Close, Andover, SP10 1DP

*I hold regular surgeries for all constituents in North West Hampshire*



**CHARTERED FINANCIAL ADVICE**

*personal patient impartial*



*Sapienter*  
**Wealth Management**



**Telephone: 0330 100 4926**

**Email: enquiries@sapienterwm.com**

**Website: <http://sapienterwm.london>**

**Peter A Sudlow Chartered FCSI**  
Chartered Fellow (Financial Planning)  
Certified Financial Planner™





**HAMPSHIRE  
MEDICAL FUND**

# Christmas Fair

at Black Chalk Winery

**Thursday 16th November 6.30pm - 9pm**  
**£10 with a glass of English Sparkling Wine on arrival**

**Friday 17th November 9.30am - 4pm £7 entry (£5 in advance)**

BOOK TICKETS HERE   SCAN HERE FOR DIRECTIONS

Kindly Supported by  Knight Frank 10% of all purchases go to Hampshire Medical Fund



### Whitchurch Silk Mill News

Thinking about Christmas Presents?

Why not buy your loved-one(s) an annual subscription, giving access to the Mill all year round? There are three levels of subscription:

- Individual – £18, giving unlimited entry to the Mill
- Joint – £30, unlimited entry to the Mill for two people
- Family – £35, unlimited entry to the Mill for two adults and up to three children (5–16 years old)

Become a Heritage Champion and Enjoy Lifetime Friends Membership and enjoy the following benefits:

- Lifetime Friends Membership
- Free admission to the Mill for you and one accompanying guest

To find out more please contact Sue Tapliss, Mill Director, on 01256 892065.

### Play Town to Return!

Popular demand will see our Play Town returning on 5 December, running until 7 January 2024. For more details see our website.

### Tiny Birds Mosaic Class, 4 November, 10am–4pm

Debbie Stirling, an experienced mosaic/community artist, promises a relaxed and supportive class with an emphasis on playful experimentation suitable for beginners and those who have already experimented with mosaic.

Safety goggles will be provided. Tickets £75, including tea and coffee. You can bring a packed lunch or buy food of various types in our café.

### Weave a Wall Hanging Workshop, 30 November, 10am–1pm

In this adult only workshop you'll learn 4-shaft weaving tips and techniques and create your own wall hanging. Tickets £80.

### Weave a Scarf Workshop, 4 & 5 November, 10am–4pm

At this two-day, adult only, workshop you'll spend ten hours learning 4-shaft weaving tips and techniques and create your own scarf. Tickets £200. There will be an hour's break on both days for you to eat your own packed lunch or buy a sandwich or yummy treat in our café.

### Hollywood to Hampshire, 15 November, 7–8.30pm

Come and hear behind the scenes and backstage stories from Hollywood and West End costume designer Nicole Small, who will offer insight into what goes into costume design and the role it plays in making successful productions. Nicole has worked in film, theatre, opera and ballet for 40 years in the UK and USA.

Her costumes have featured in films such as Pirates of the Caribbean, Tim Burton's Alice, and Fantastic Beasts, tv productions such as Bridgerton, and theatre productions at the Royal National, Shakespeare's Globe and the Theatre Royal Drury Lane. Tickets £15. Tea and coffee will be available for a donation.

### Pins and Needles Craft Group

Our adult crafting group meets on the first Thursday of the month and is open to all. On 2 November you can learn how to make honeycomb snowball Christmas decorations from felt, and on 7 December we'll be teaching how to make reusable Christmas crackers. Tickets £12.50 per session including tuition, materials and a hot drink. Booking is essential as places go fast.

Tickets for our events are available from the Mill Shop or from our website via the 'What's on' page.

Contact: [info@whitchurchsilkmill.org.uk](mailto:info@whitchurchsilkmill.org.uk) – 01256 892065 – [www.whitchurchsilkmill.org.uk](http://www.whitchurchsilkmill.org.uk). And to keep up to date with what's on at the Mill you can follow us on Twitter, Facebook



**ST MARY BOURNE & WOODCOTT**

- 2 2.30pm - Christmas wreath making - Village Centre Club Room  
 3 7pm - 'Painting at the Pub' - The George Inn  
 6 7.30pm - SMB Cricket Club AGM - Village Centre Club Room  
 8 12.30pm - 'The Lunch' - Village Centre Main Hall  
 14 10.30am - Coffee at The George Inn  
 14 7.30pm - Parish Council meeting - Village Centre Club Room  
 16 7.30pm - Andover Astronomical Society - Hurstbourne Tarrant Village Hall  
 18 7.30pm - SMB Cricket Club QUIZ NIGHT - Village Centre Main Hall  
 21 7.15pm - 'The Film' - *THE OLD OAK* - Village Centre Main Hall  
 25 2 to 4pm - St Peter's Church Christmas Bazaar - Village Centre Main Hall  
 2 Dec 7.30pm - Andover Choral Society Christmas Concert - St Mary's, Andover

**LONGPARISH**

- 4 10am - Village Clean Up  
 10 10am to 12noon - Coffee Morning - The Plough  
 12 9am - L2S0TM Race - Cricket Ground  
 13 7.30pm - Parish Council Meeting - Village Hall  
 14 7pm - Tuesday Talk with Dodie Marsden - Village Hall  
 24 12noon to 2pm - Lunch Club - Village Hall  
 28 7pm - Gardening Club - Village Hall



If you have an interesting local or a seasonal photograph that could be used for the front cover of Hill & Valley, please send it to one of the editors listed below. Please provide any contributions in portrait and jpg format if possible.

**HURSTBOURNE PRIORS**

- 8 7.30pm - Hurstbourne Priors Gardening Club - Hurstbourne Priors House  
 11 10am to 1pm - Pre-loved children's clothes sale - Village Hall  
 16 10.15am to 12noon - Ladies' Coffee Morning - The Limes (opposite Equestrian Centre)

Front cover photograph: M. Widén



**Hurstbourne Priors Village Hall:** Mrs Helen Ford, ☎ 07789 691018, e: [helenford62@hotmail.co.uk](mailto:helenford62@hotmail.co.uk)  
**Longparish Village Hall:** Mrs Maggie Barber, ☎ 01264 720459, e: [villagehall@longparish.org.uk](mailto:villagehall@longparish.org.uk)  
**Longparish Community Hall:** During school open hours, Mrs Christine Leach ☎ 01264 720317  
**St Mary Bourne Village Centre:** Miss Angela Cook, ☎ 01264 738158, e: [smbvillagecentre@btinternet.com](mailto:smbvillagecentre@btinternet.com)

**Copy date for the December 2023 / January 2024 Hill & Valley edition: Wednesday 15<sup>th</sup> November 2023**

Your contributions - letters, pictures, comments or articles are always welcome. Contact your parish editor by the copy date.

Printed by The Andover Printing Company Ltd ☎ 01264 334220 [www.andoverprinting.co.uk](http://www.andoverprinting.co.uk) © Hill & Valley Parish Magazine 2023

**Parish Editors**

**Hurstbourne Priors:** Felicity Long

☎ 07851 764344 - [flisslong15@gmail.com](mailto:flisslong15@gmail.com)

**Longparish:** Angie Curtis

☎ 07572 753512 - [hillandvalley@longparish.org.uk](mailto:hillandvalley@longparish.org.uk)

**St Mary Bourne & Woodcott:** Nigel Dickinson

☎ 07810 293371

[nigeld24@gmail.com](mailto:nigeld24@gmail.com)

**Editorial:** Tom Bremridge, Longparish ☎ 01264 720 540

Michael Widén, St Mary Bourne ☎ 01264 738 250

**Production/Distribution:** Tom Bremridge, Longparish,

☎ 01264 720 540 - [tbremridge@gmail.com](mailto:tbremridge@gmail.com)

Michael Widén, St Mary Bourne,

☎ 01264 738 250 - [hillandvalley@btinternet.com](mailto:hillandvalley@btinternet.com)

**Websites**

\* Hill & Valley pages on-line

**Hurstbourne Priors:**

Parish Council: [www.hurstbournepriors-pc.org.uk](http://www.hurstbournepriors-pc.org.uk) \*

**Longparish:**

Parish Council: [www.longparish.org.uk](http://www.longparish.org.uk) \*

**St Mary Bourne:**

Parish Council: [www.stmarybourne-pc.gov.uk](http://www.stmarybourne-pc.gov.uk) \*

Village Centre: [www.stmarybourne.co.uk](http://www.stmarybourne.co.uk)

Community Hub: [www.stmarybourne.org](http://www.stmarybourne.org) \*

**Village Scrap Book:**

Jeanette Davies, [daviessmb@aol.com](mailto:daviessmb@aol.com), ☎ 07553 044 330

**Advertising**

Michael Widén, St Mary Bourne,

☎ 01264 738 250 - [hillandvalley@btinternet.com](mailto:hillandvalley@btinternet.com)